

TUSB3410 VCP Single Driver Installation

This document contains the installation procedure of TUSB3410 VCP single driver on Windows XP, Windows Vista, Windows 7, Windows 8 and Windows 10.

To install the TUSB3410 VCP Driver, run setup.exe located in the installation media. The progress is shown by the following windows.

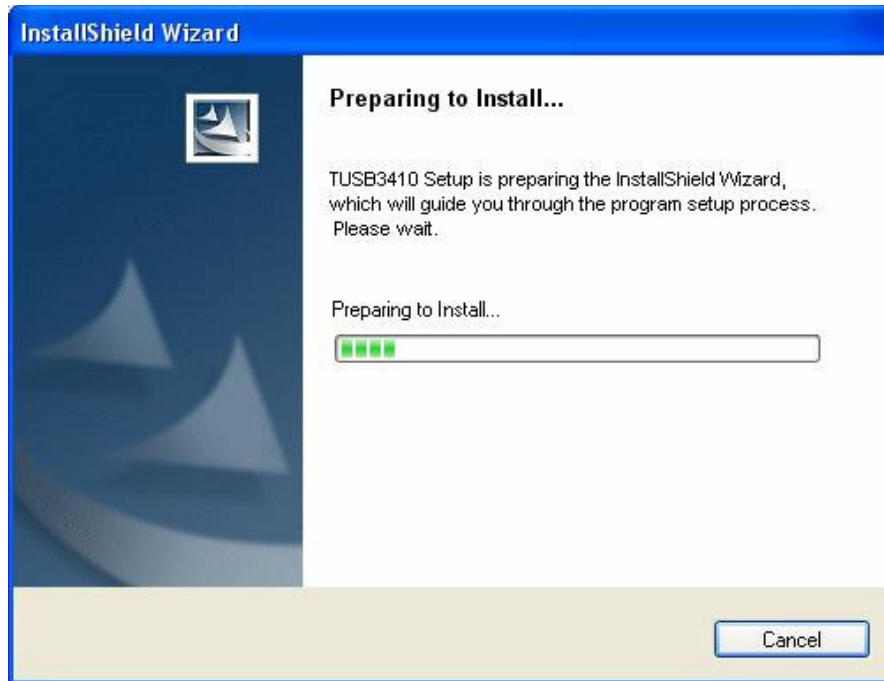


Figure 1. TUSB3410 VCP Driver installation progress

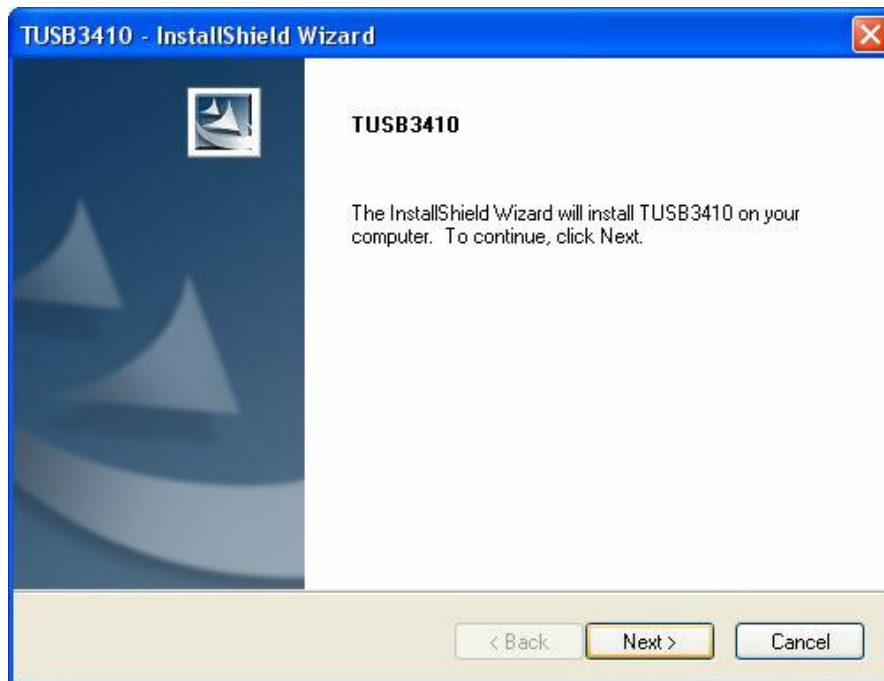


Figure 2. TUSB3410 VCP Driver installation progress

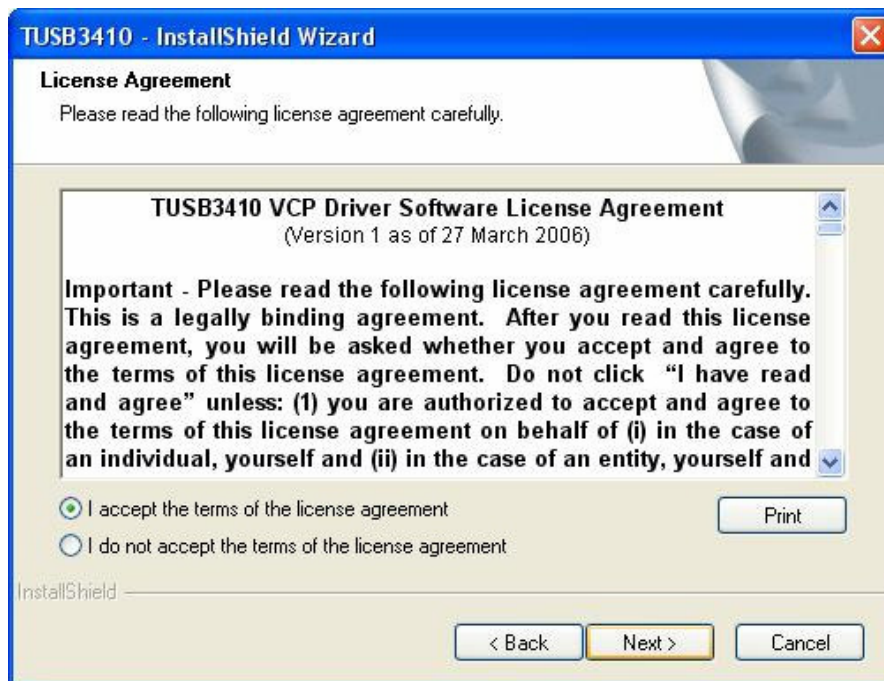


Figure 3. TUSB3410 VCP Driver Software License agreement.

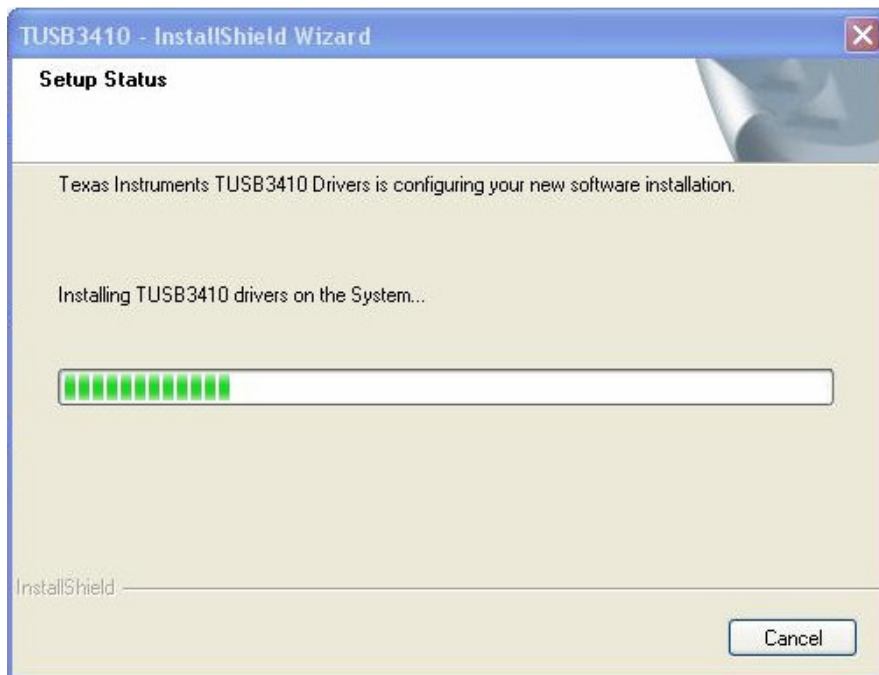


Figure 4. TUSB3410 VCP Driver installation progress.

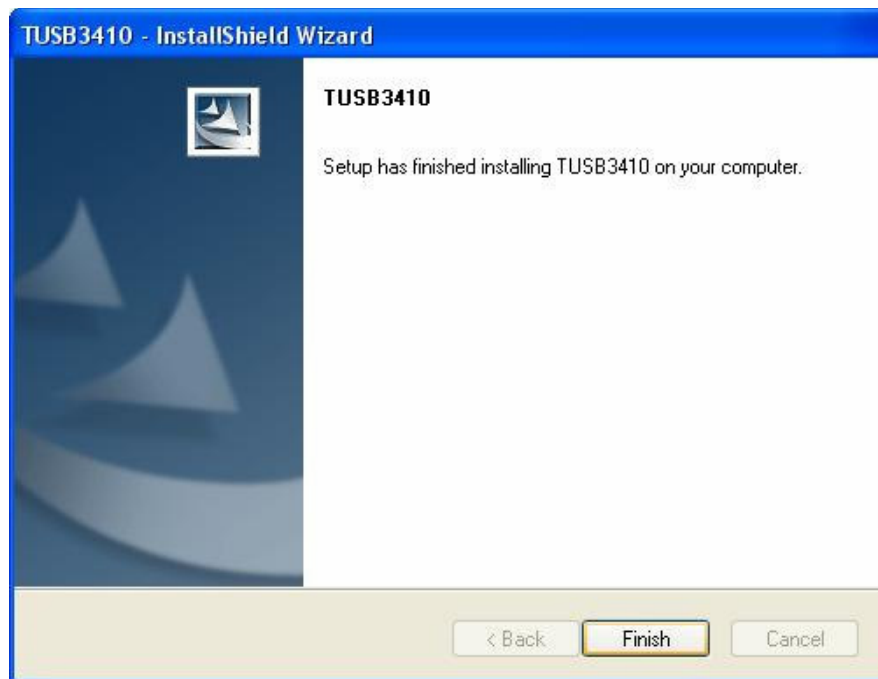


Figure 5. TUSB3410 VCP Driver installation completion.

Click Finish to complete installation of the TUSB3410 VCP single drivers.

A successful installation is as shown by the Device Manager display below. Inside the Ports Category, a VCP port is installed.

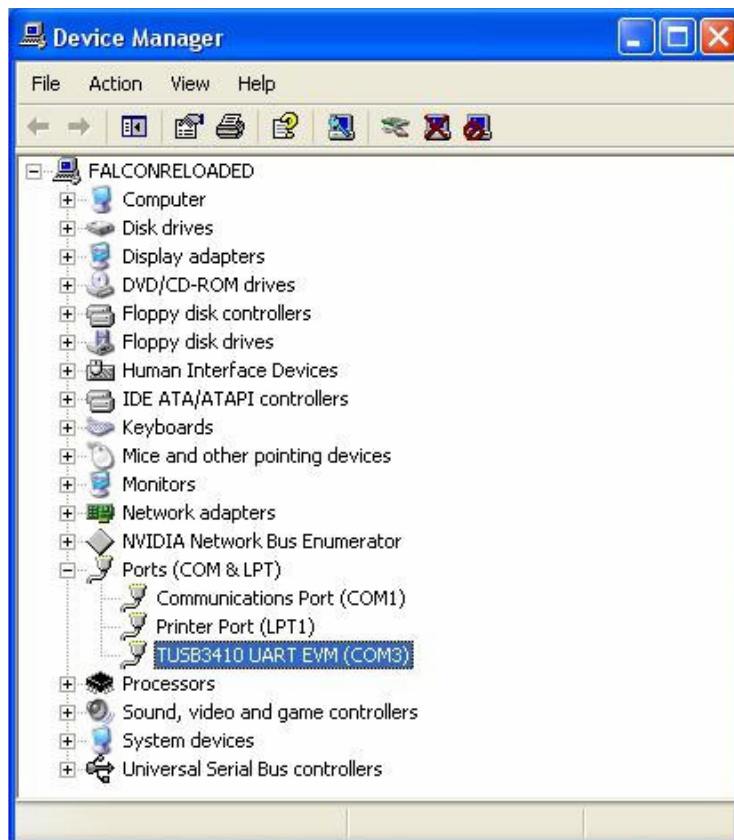


Figure 6. TUSB3410 VCP installed.